



News Update

Ko Yin Mineral Water.....Home and Dry!

Production

I am very happy to inform you that the Ko Yin mineral water factory became operational on 20th August 2014. The project was completed on time and under budget. A truly momentous occasion for the Phaya Taung Monastery and a great achievement for The Inle Trust.

Initially we hope to produce 5000 gallons a day. At least 2500 gallons of the best quality mineral water a day will be available for the 1000 children at the monastery and the villagers to drink. The rest will be bottled in 20 litre, 1 litre & .6 litre bottles and sold locally.





Business Development

Once production has been up and running smoothly we will concentrate on developing the business side on our subsequent visits. We will focus on marketing and distribution to hotels and restaurants catering to the tourists.



Thank you

On behalf of The Inle Trust I am very grateful to our well-wishers, and to those of you who have donated your money, time and expertise. Thank you very much.

Without your help this dream could never have been fulfilled.....the children are already drinking this purified mineral water and soon there will be a good income to feed them properly.



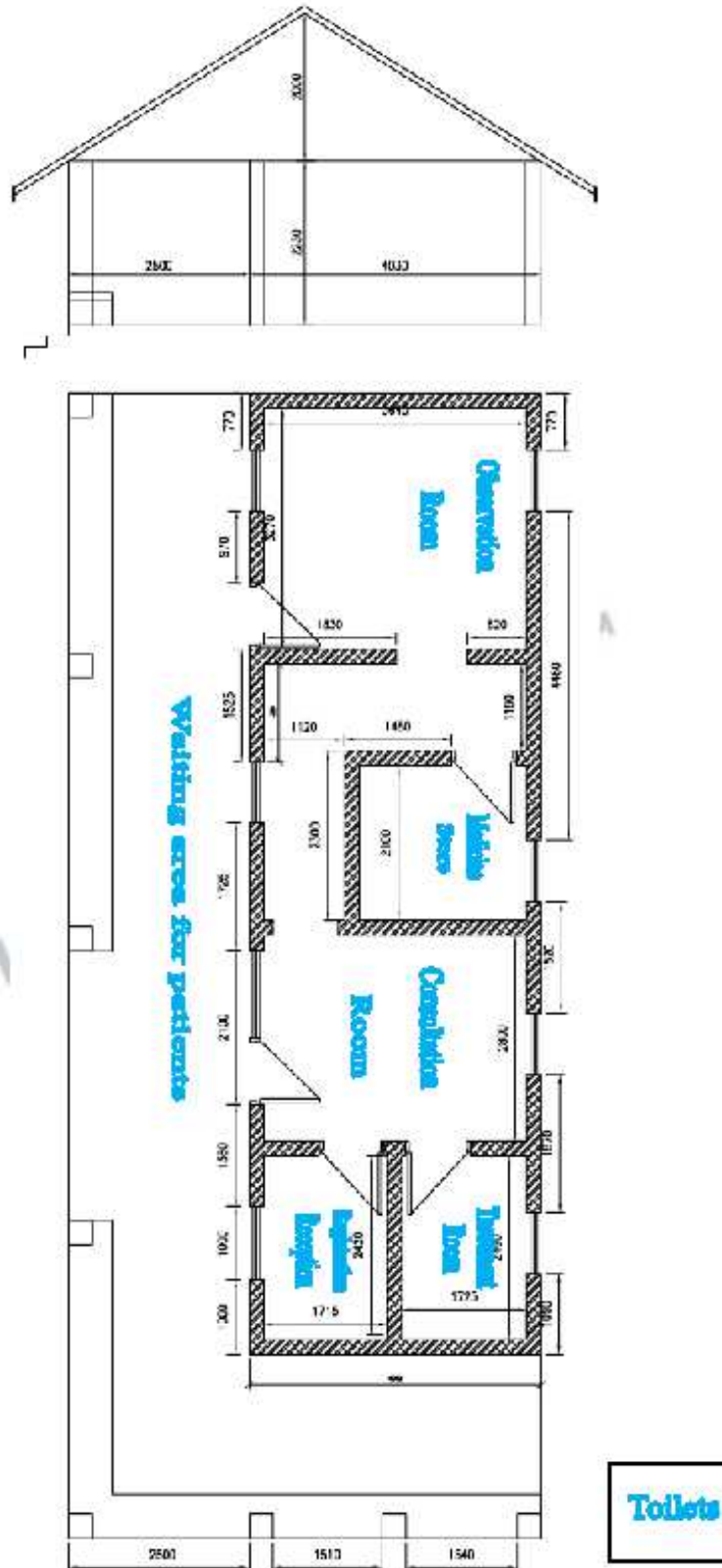
Book: Children of the Revolution

Please continue to buy (plenty of copies) and promote *Children of the Revolution*. It has had a super *reader feedback* and also continues to be a good source of income for the Charity.



Next Project

The Inle Trust's next project is building a clinic for the children at the monastery. There are some 1000 children and 3000 or so villagers who have no immediate access to medical facilities.



If you require any further information or wish to be involved in any way please do contact me. Donations may be made at: **www.inletrust.org.uk**

Feroze Dada (Mobile 07770885540)

The Inle Trust, 52 Jermyn Street, London, SW1Y 6LX, United Kingdom
Tel: +44 (0)7770 885 540 | Email: trustees@inletrust.org.uk | Website:
www.inletrust.org.uk

Charity Registered in England Number 1154767